

ACSI  **MEMBER SCHOOLS**



**STRONGER
TOGETHER**

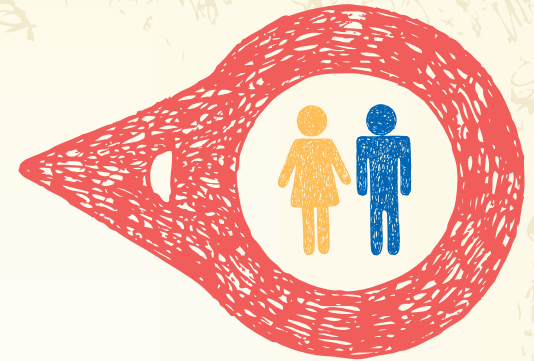


Nearly 5 million U.S. students, or about 10 percent of all, attend private schools.



Nearly 34,000 U.S. schools, or about 25 percent of all, are private schools.

Safety



Private vs. Public Schools

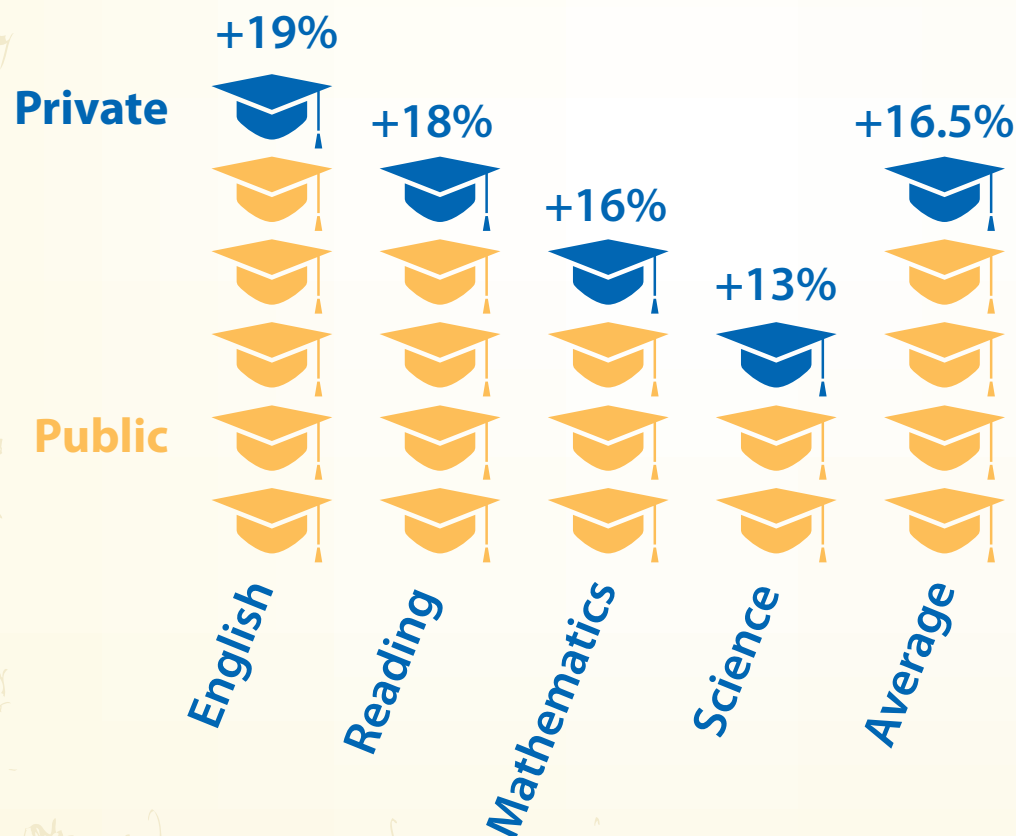
✕
✕✕✕✕
✕✕✕✕
✕✕ Public school students report gang activity in their schools nearly **ten times** as often as private school students.

✕
✕✕ Public school students are over **twice** as likely to experience criminal activity against them at school.

✕
✕✕ Public school students are over **twice** as likely to fear being attacked or harmed at school.

Graduate Preparedness

for College Coursework



A greater percentage of ACT-tested graduates of private schools are prepared for college coursework.



is the largest Protestant Christian education association in the world.



since 1978

ACSI has been strengthening Christian schools and equipping Christian educators since 1978.

108 countries

ACSI has member schools in 108 countries.

5.5 million children

ACSI member schools serve 5.5 million children globally.



is the largest Protestant Christian education association in the world.



24,000 schools

ACSI supports nearly 24,000 member schools.

30 offices

ACSI has 30 offices around the world.

80,000 teachers

ACSI has certified nearly 80,000 teachers.

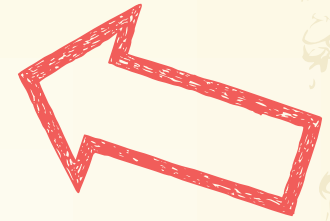
These comments do not promise the quality of an individual school; they are representative comments of ACSI schools as a whole.

ACSI  **ACCREDITED SCHOOLS**



**WORLD-CLASS
ADVANTAGES**

Top Emphasis



ACSI Accredited vs. Public Schools




More than two-thirds of administrators in **ACSI** accredited schools said their top priorities for students were development of a **Christian worldview**, involvement in **evangelism**, or a **close, personal relationship with God**.



Eighty percent of public school principals said their top priority was for **student basic literacy**.



Spiritual

- ACSI accredited schools have remained the **most theologically stable** and consistent over the past five years of any surveyed.**
- Christian school graduates are significantly **more likely to pray** and read Scripture both alone and with a spouse and children.* 
- ACSI accredited schools have these **top priorities**: for students to have a close, personal relationship with God and for students to develop a Christian worldview.**

* Protestant Christian schools compared with Catholic, public, and private nonreligious schools as well as homeschools

** ACSI accredited schools compared with other ACSI members, Protestant Christian schools, and Catholic schools



Spiritual *continued*

- Christian school graduates are more likely to **attend religious services** and respect the authority of church leadership.*



- All ACSI accredited schools that were asked responded affirmatively that the **Bible is the inspired Word of God** and that it does not err in moral, spiritual, and religious matters.**



* Protestant Christian schools compared with Catholic, public, and private nonreligious schools as well as homeschools

** ACSI accredited schools compared with other ACSI members, Protestant Christian schools, and Catholic schools

Cultural

- A greater percentage of ACSI accredited schools offer mission and **social service opportunities** both in the United States and Canada.**



- Christian school graduates **donate significantly more money** to their churches, religious causes, and other charitable causes overall.*



- A higher percentage of ACSI accredited programs have official ties to **student social service organizations**.**

* Protestant Christian schools compared with Catholic, public, and private nonreligious schools as well as homeschools

** ACSI accredited schools compared with other ACSI members, Protestant Christian schools, and Catholic schools

Cultural

continued

- Christian school graduates **give more of their time** to volunteer in their congregations, on mission trips, and on relief/aid trips.*
- A higher percentage of ACSI accredited schools report **student involvement** in political campaigns, meetings, or rallies.**



* Protestant Christian schools compared with Catholic, public, and private nonreligious schools as well as homeschools

** ACSI accredited schools compared with other ACSI members, Protestant Christian schools, and Catholic schools

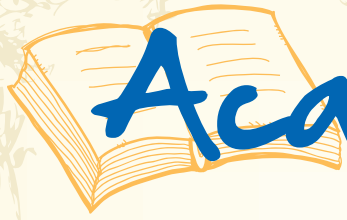


Academic

- On average, ACSI accredited schools require **more rigorous course loads** in math, science, English, languages, civics, social studies, art or music, and Bible than all other programs surveyed.**
- ACSI accredited schools, on average, offer more **Advanced Placement courses** than other Protestant schools.**
- ACSI school graduates **attend college at a significantly higher rate** than the national average (86 percent compared with 68 percent).



** ACSI accredited schools compared with other ACSI members, Protestant Christian schools, and Catholic schools



Academic *continued*

- Since 1974 ACSI schools have **scored significantly higher** than the national norm in every grade level on a national achievement test.
- A recent study shows that religious school graduates, on average, exceeded the SAT College & Career Readiness Benchmark while public school students, on average, failed to meet the same standard. On average, religious school graduates scored **44 points higher**.





**Find out more about these facts and the related studies by
visiting www.acsi.org/why-christian-schooling.**

These comments do not promise the quality of an individual school; they are representative comments of ACSI schools as a whole.